

Disassemble Process: TTL TEKNOPACK

ÍNDICE

1. - Model.....	2
2. - Result after disassembling all.....	3
3. - Process step by step.....	4
3.1. - Covers Up and Down.....	4
3.2. - Side Cover.....	5
3.3. - External Support.	5
3.4. - Front Bezel.	6
3.5. - Motherboard.	6
3.5.1. - Hard Disk.....	7
3.5.2. – Motherboard’s battery.....	8
3.5.2. - Fan Motherboard.....	9
3.5.3. - CPU Heat Sink.....	9
3.5.4. - CPU.....	10
3.5.5. - Memory Card.	10
3.5.6. - Wires and Cables.	11
3.5.7. - Laminate Plate.	12
3.6. - Power Supply.....	12
3.6.1. - Use the cutter and the screwdriver.....	12
3.6.2. - We separate with our hands.	13
3.6.3. - Result previous step.	13
3.6.4. - Cut the cable.	13
3.6.5. - Completed Process.....	14
3.6.6. - Cable disassembly.....	14
3.6.7. - Result.	15
4. - RAAE\WEEE.	15

1. - Model

The following process is applied for the product TTL TEKNOPACK.

Fig. 1:



Fig. 2:



For this model fig.1, we need only four tools:

Use the following tools:

- Screwdriver Philips 0x65, fig.1.
- Electrician scissors, fig. 2.
- Screwdriver Super-SNCM, 3.0x100mm.
- Cutter

2. - Result after disassembling all

After we have disassembled the product, fig.3.

Fig. 3:



This is the list of the disassembling parts. The numbers in red meets the list.

1.	Top Cover	Metal	9.	Hard Disk	Metal
2.	Lamination Plate	Metal	10.	External Support	Plastic
3.	Front Bezel	Plastic	11.	Bottom Cover	Metal
4.	Fan	Metal	12.	Side Cover	Plastic
5.	Motherboard	Metal	13.	Cable	Plastic/Metal
6.	Cover CPU	Plastic	14.	Top and Bottom Power Supply	Plastic
7.	CPU	Metal	15.	Electrical Circuit	Metal
8.	Wires and Cables	Plastic/Metal			

3. - Process step by step.

3.1. - Covers Up and Down.

Use the screwdriver to remove the screws and separate the top cover:

Fig. 4



Fig. 5

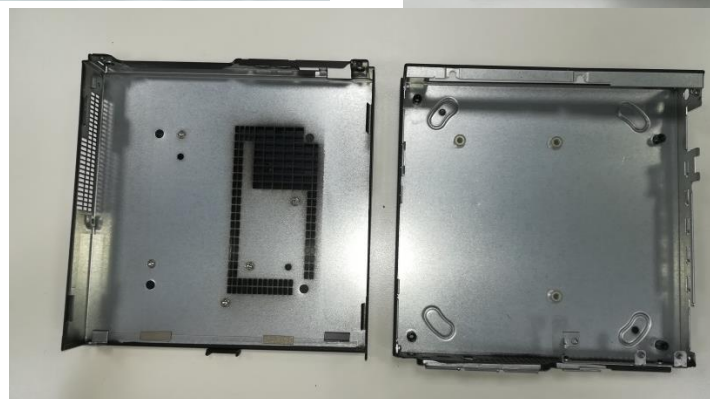


Use your hands to separate the top and bottom cover.

Fig. 6



Fig. 7



3.2. - Side Cover.

With the help of the screwdriver we can remove the side cover:

Fig. 8



Fig. 9



3.3. - External Support.

Again, with the help of the screwdriver we can remove the external support:

Fig. 10

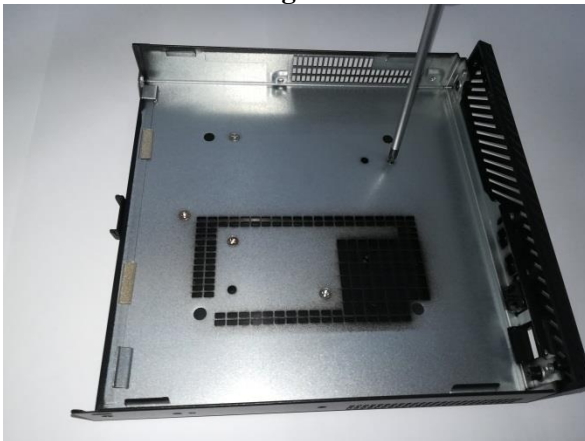
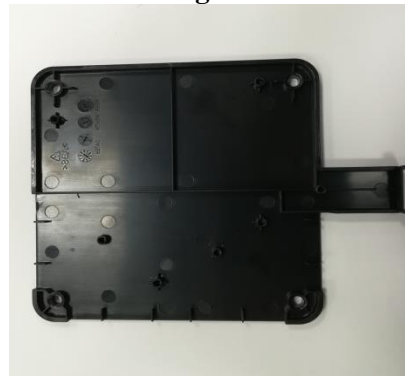


Fig. 11



3.4. - Front Bezel.

The front bezel can also be easily removed with the screwdriver:

Fig. 12

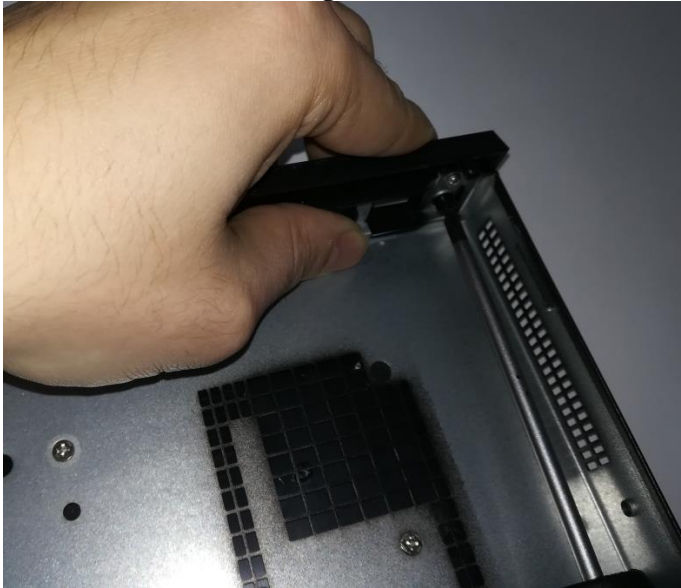


Fig. 13



3.5. - Motherboard.

The Motherboard is fixed to the case with four screws. We must use the screwdriver to take out the four screws, Fig. 14.

Fig. 14



Once unscrewed we can remove it from the chassis:



But, before reaching this step, we had to remove other elements such as:

3.5.1. - Hard Disk.

With the help of the screwdriver we can remove the SSD:

Fig. 15



Fig. 16



3.5.2. – Motherboard's battery

To remove the battery from the motherboard, just use your hands to firmly hold the connector that goes to the plate and pull up until it is released, like the body of the battery (attached to the plate by a double-sided tape):

Fig. 17



Fig. 18



3.5.2. - Fan Motherboard.

To remove the fan from the motherboard, just use our hands:

Fig. 19



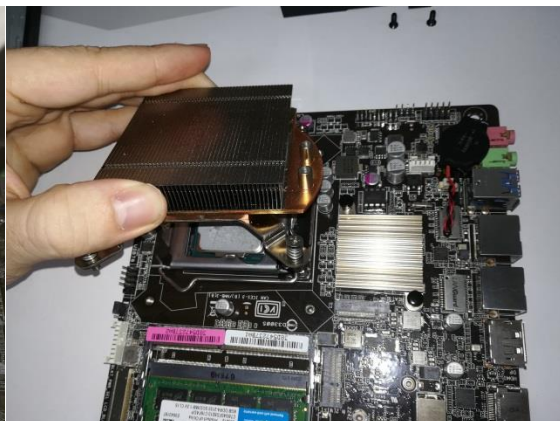
3.5.3. - CPU Heat Sink.

We must unscrew four screws in the corner of the heat sink. After just lift it.

Fig. 20



Fig. 21



3.5.4. - CPU.

This is the last component that can be extracted from the motherboard. It requires a special care to handle it.

The CPU as a protection which must be lifted to take out the unit. To do this, look at the Fig. 22, we must press on the clip and then while it is pressed move it outward and release the pressure, Fig. 23. The CPU and be extracted with the fingers:

Fig. 22

Fig. 23



3.5.5. - Memory Card.

The memory card is inserted in its slot and retained with some clips. Use the hands to open the clips and lift the memory card until it reaches the enough angles to pull out from the slot:

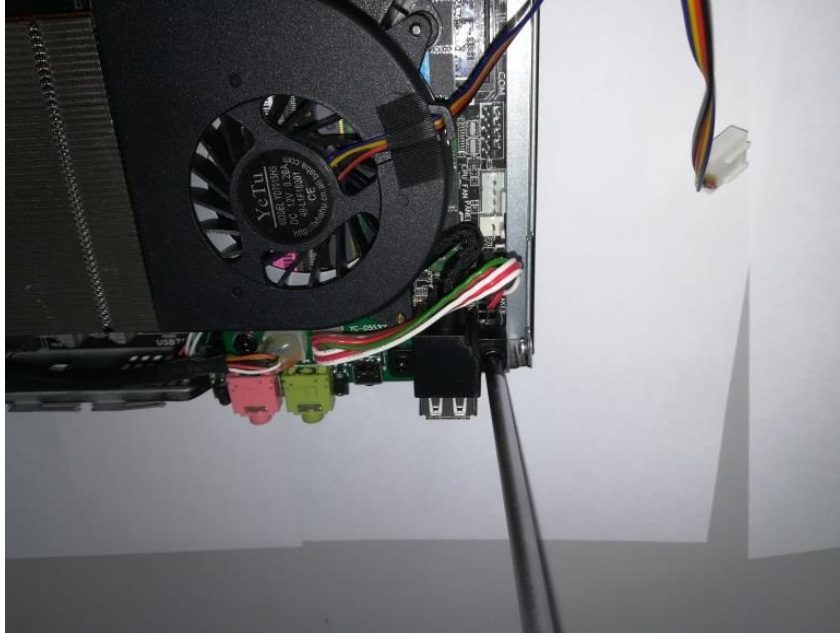
Fig. 24



3.5.6. - Wires and Cables.

To separate the cables from the box and from the base plate we use the screwdriver:

Fig. 25



We already have the cables separated:

Fig. 26



3.5.7. - Laminate Plate.

This piece is in one side of the case. It is the place where the motherboard shows its external connections. It can be extracted just pushing with fingers, Fig. 27:

Fig. 27

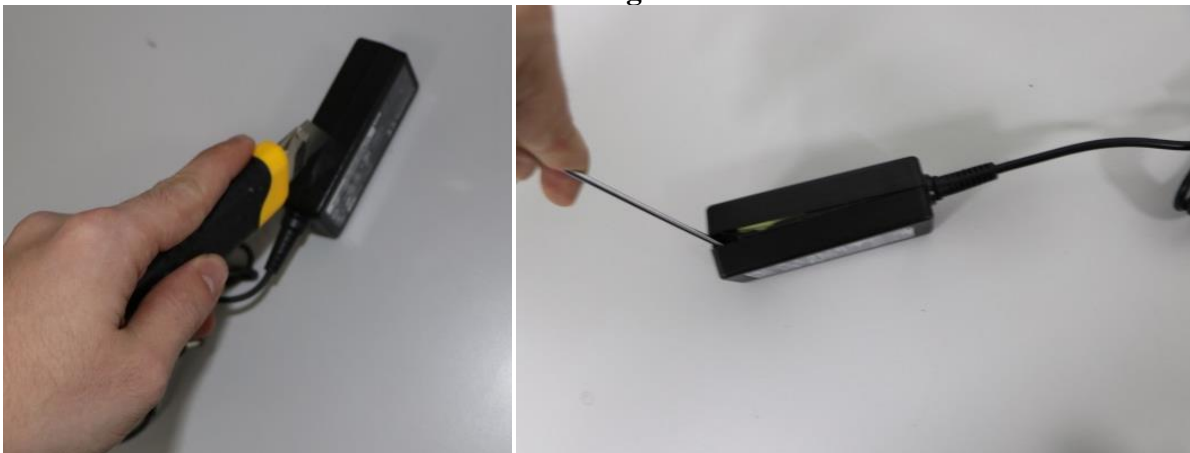


3.6. - Power Supply.

3.6.1. - Use the cutter and the screwdriver.

An opening is created on the side with the cutter and then separated using the screwdriver.

Fig. 28



3.6.2. - We separate with our hands.

With the help of our hands we separate the plastic sides.

Fig. 29



3.6.3. - Result previous step.

Once we manage to separate the plastic covers we have these two elements:

Fig 30



3.6.4. - Cut the cable.

We cut the cable with scissors.

Fig.31



3.6.5. - Completed Process.

Finally we see all the pieces disassembled individually.

Fig. 32



3.6.6. - Cable disassembly.

First, the plug cable is cut, then with the cutter we cut the cable coverage.

Fig. 33



3.6.7. - Result.

We get two cables: cable jacket (black) and cable insulation (white).

Fig.34



4. - RAAE\WEEE.

The composition of the elements must be taken account if they are going to be reused or recycled. To know that information visit the following URL:

http://tiendattl.es/upload/tkpack/Weee_declaration.tkpack.pdf