

## Upgrades for Teknopack

Any improvement that wants to be implemented in your Teknopack must be acquired through any of the following methods:

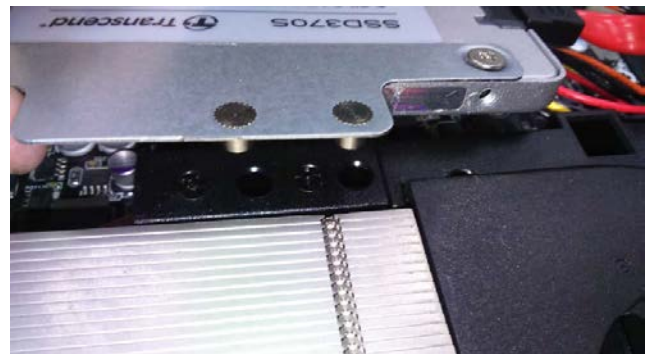
- It will be requested by phone (+34 954 541212)
- Or by email ([serviciotecnico@teknoservice.es](mailto:serviciotecnico@teknoservice.es))
  - Including in both cases:
    - CIF / VAT of the company, government department or end user.
    - Part number of the spare part.
    - Purchase invoice number.
    - Serial number.
- Or filling out the form on the following website:  
<http://www.ttlcomputer.es/support/guarantee-query/>

**Before following any of the following instructions, disconnect the equipment power supply and touch a metal surface to eliminate static electricity from the body.**

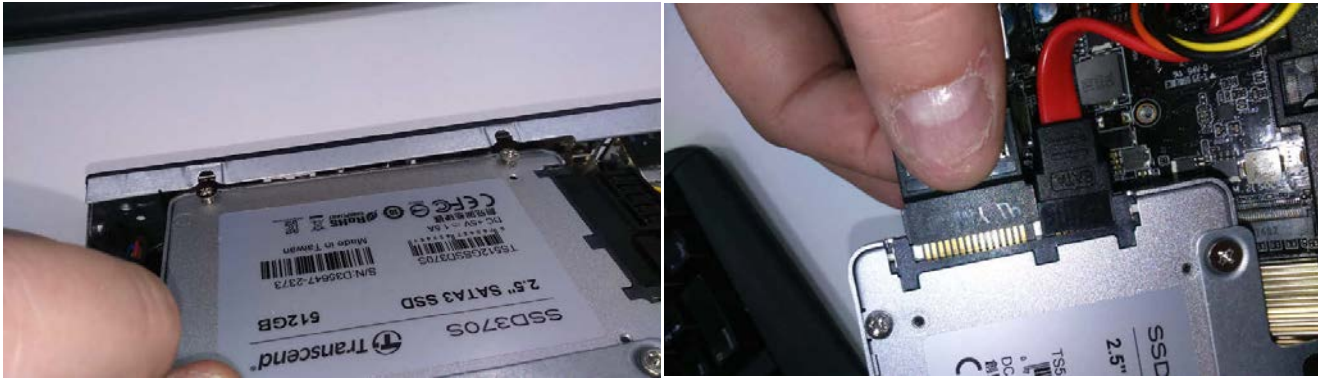
### SSD

For the installation of the acquired SSD, we will rely on the dismantling instructions document [http://tiendattl.es/upload/tkpack/Disassemble\\_process.tkpack.pdf](http://tiendattl.es/upload/tkpack/Disassemble_process.tkpack.pdf), specifically at the point 3.1.- Covers Up and Down, where is detailed how to disassemble the top cover of your Teknopack. Once we have reached that point, we will begin the process.

Loosen the two Phillips 1 screws, indicated in the image, with no more than 4 turns. We will pull up the support screwed to the SSD that is on the opposite side where we have loosened the screws and so we will free it from the anchors that hold it on that side.



Pulling the SSD easily disengages from the slots of the chassis that support it. The SSD is only connected to the Teknopack by the SATA cable and the power cable, which we will remove by firmly holding the SSD and pulling the cable connector.

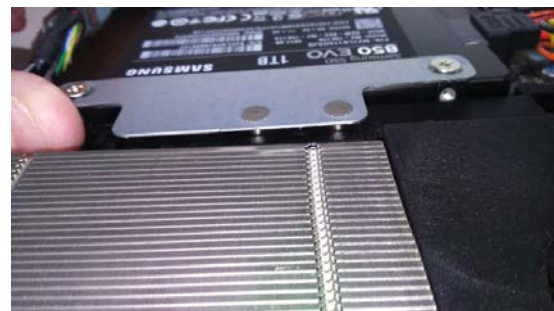


Now we must extract the screws that are subject to the SSD (all with a simple screwdriver for Phillips 1) keeping an order to use them in the newly acquired 1Tb SSD in the same positions. When you screw the ones located in the lower part of the images, do not tighten them completely.





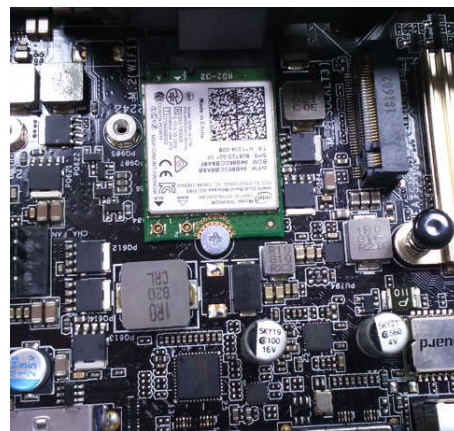
The following steps are like the previous ones but in the opposite direction, wiring connection (looking at the position of the connector that is L-shaped), insertion of the SSD in the chassis, relying on the chassis itself, fitting the pivots on the opposite side and finally tighten the screws that fit into the chassis. We replace the top cover of our Teknopak and the work will be done.



## WIFI

For the installation of the acquired M.2 WiFi card, we will rely on the dismantling instructions document [http://tiendatti.es/upload/tpack/Disassemble\\_process.tpack.pdf](http://tiendatti.es/upload/tpack/Disassemble_process.tpack.pdf), specifically at the point 3.1.- Covers Up and Down, where is detailed how to disassemble the top cover of your Teknopak. At that point we must also use the previous section of **SSD**, because to access the M.2 socket we must extract the SSD.

First, we will align the WLAN card M.2 with the socket so that the pins and slots coincide, insert the card to the bottom and then press it down to see how the holes coincide by which the screw also supplied will hold the card to the motherboard.



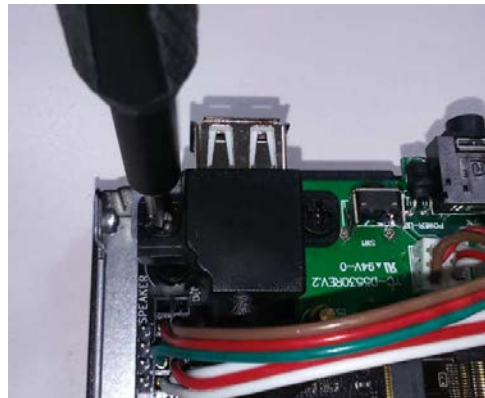
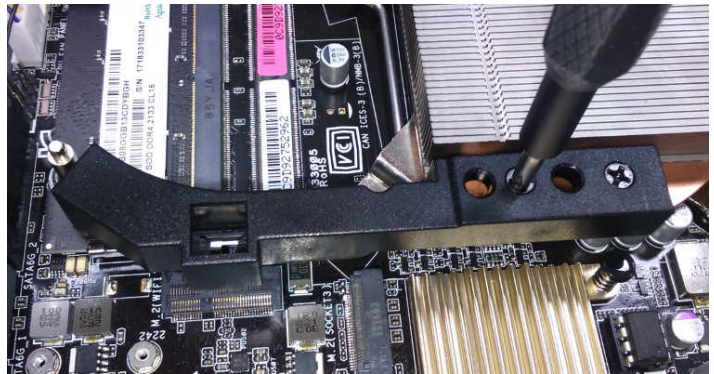
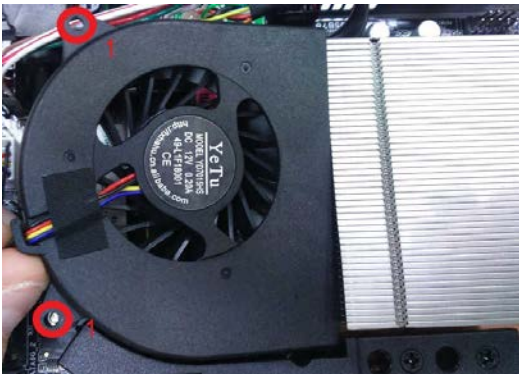
Next, we will use the antenna cables also supplied. The MHF4 connectors must be inserted through some front hollow of the chassis so that the antennas are covered by the plastic front. The main and auxiliary connectors are connected in the same way, face male to female connector and press until it clip. Subsequently, the cables must be positioned so that they are far from sources of heat. And finally stick the antennas on the front; replace the SSD and the top cover.



## RAM memory

For the installation of the acquired M.2 WiFi card, we will rely on the dismantling instructions document [http://tiendatti.es/upload/tpack/Disassemble\\_process.tpack.pdf](http://tiendatti.es/upload/tpack/Disassemble_process.tpack.pdf), specifically at the point 3.1.- Covers Up and Down, where is detailed how to disassemble the top cover of your Teknopak. At that point we must also use the previous section of **SSD** and extract it.

We must start the extraction of the CPU fan, holding it as shown in the image. We elevate the whole piece disengaging it from the pivots that keep it in place and without disconnecting the cable it can be moved to leave space to access. Then unscrew the Phillips screws 1 that hold the side support of the fan. For its extraction, pull the piece vertically. And dismantle the USB connector from the front, which also has Phillips 1 screws, removing the screws comes out comfortably.



Now we have free access to the RAM socket where we will face the module of RAM acquired to match pins and slots where we only have to push it to the bottom and once reached, push down so that the metallic attachments of the sides leave and in their position final RAM memory. Then everything that has been removed in reverse order will have to be replaced. USB, CPU fan support, CPU fan, SSD and finally the top cover.

