

Disassemble Process: TTL TEKNOPRO

INDEX:

1. Model.
2. Result after disassembling all.
3. Process step by step.
 - 3.1 Unplug the Power Cord by hand.
 - 3.2 Covers left and Rights.
 - 3.3 Hand Close and Bracket hand Close.
 - 3.4 Motherboard and Coin Cell Battery.
 - 3.5 CPU fan and CPU Heat Sink.
 - 3.6 CPU and Memory Card.
 - 3.7 Lamination Plate.
 - 3.8 Tap rear slots, FDD fastener, and ODD fastener lock.
 - 3.9 Power Supply disassembling.
 - 3.10 Front Bezel, Front 3.5", Front 5.4".
 - 3.11 USB and LED disassembling.
 - 3.12 Case
4. RAEE\ WEEE

1. Model.

The following process is applied for the product TTLTEKNOPRO.

Fig. 1:



Fig. 2:



For this model fig.1, we need only two tools:

Use the following tools:

- Screwdriver Philips 0x65, fig.2.
- Screwdriver Philips PZ2, fig.2.
- Electrician scissors, fig. 2.

2. Result after disassembling all

After we have disassembled the product, fig.3a and fig.3b.

Fig. 3a:



Fig. 3b:



This is the list of the disassembling parts. The numbers in red meets the list.

<u>Nº</u>	<u>Component</u>	<u>Type Material</u>	<u>Nº</u>	<u>Component</u>	<u>Type Material</u>
1	Covers left and right	Metal	11.3	Fan Blades CPU	Plastic
2	Case	Metal	11.4	Fan Hooks CPU	Plastic
3	Power Cord	Plastic/Metal	12	Front Bezel	Plastic
4.1	Grid Power Supply	Metal	13	3,5" Plastic Cover	Plastic
4.2	Fan Power Supply	Plastic	14	5,25" Plastic Cover	Plastic
4.3	Motherboard Power Supply	Metal	15	HDD Hold 5,25"	Plastic
4.4	Top Cover Power Supply	Metal	16	Holder Fan	Plastic
4.5	Bottom Cover Power Supply	Metal	17	HDD Plastic Tray	Plastic
4.6	Plug and Switch Power Supply	Plastic	18	Side Cover Fastener HUB	Plastic
4.7	Wires Power Supply	Plastic/Metal	19	ODD Fastener	Plastic
5	Metal Top	Metal	20	FDD Fastener	Plastic
6	Wires Led	Plastic/Metal	21	SW Holder	Plastic
7	Bracket Hand Close	Metal	22	Side Cover Fastener	Plastic
8	Motherboard	Metal	23	Lamination Plate	Metal
9	Battery	Metal	24	Led Holder	Plastic
10	CPU	Metal	25	Side Cover Fastener Inner	Plastic
11.1	CPU Heatsink	Metal	26	L Shape Fastener	Plastic
11.2	Fan Base CPU	Plastic	27	Memory Card	Metal

3. Process step by step.

3.1 Unplug the Power Cord by Hand.

The Power Cord must take out by hand. Just pull out, in the Tecknopro rear, fig.4. The details of their certifications on fig.5.

Fig. 4:



Fig. 5:



3.2 Covers left and right.

Use the Screwdriver to take out all the screws in the rear, fig.6.

Use the hand to open the lock of the right case fig.7.

Use the hand to press and pull of the left case fig.8.

The two Covers are in the fig.9.

Fig. 6:



Fig. 7:



Fig. 8:



Fig. 9:



3.3 Side Cover Fastener HUB and Bracket hand Close

The Side Cover Fastener HUB is the lock of one of the Covers. We need to use the screwdriver to unfix the complete piece and then we can separate the plastic component from the metal one.



3.4 Motherboard and Coin Cell Battery.

With screwdriver, take out the screws that fix the motherboard to the Case, fig. 12. Unplug by hand all the wires connected to it fig. 11. Lift using the hand the Motherboard up to reach the angle enough to pull out and pull up, fig. 13.

Fig. 10:



Fig. 11:



Fig. 12:

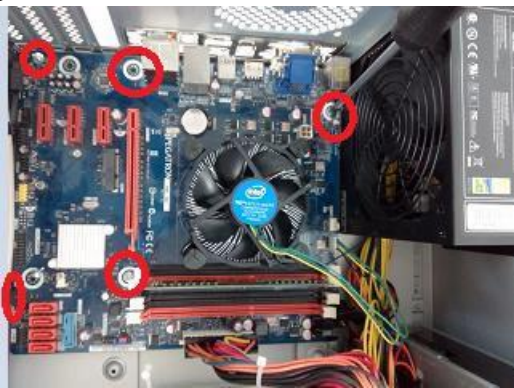
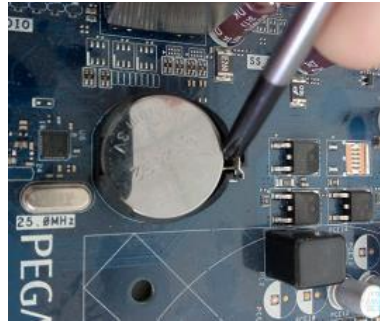


Fig. 13:



To pull out the Button battery, use for this the screwdriver, pushing and pulling.



3.5 CPU FAN and CPU Heat Sink.

Use the hand to turn right the four plastic screws of the fan fig. 14. Then pull out.
Use the hand to bend the two taps of the plastic fan and take out heat sink fig. 16.

Fig. 14:



Fig. 15:



Fig: 16:

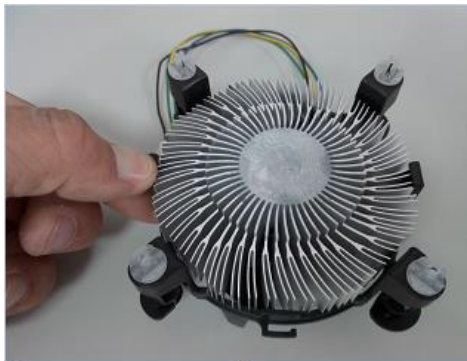
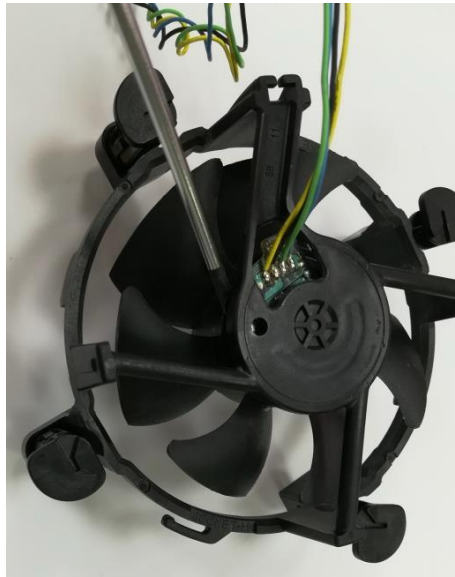


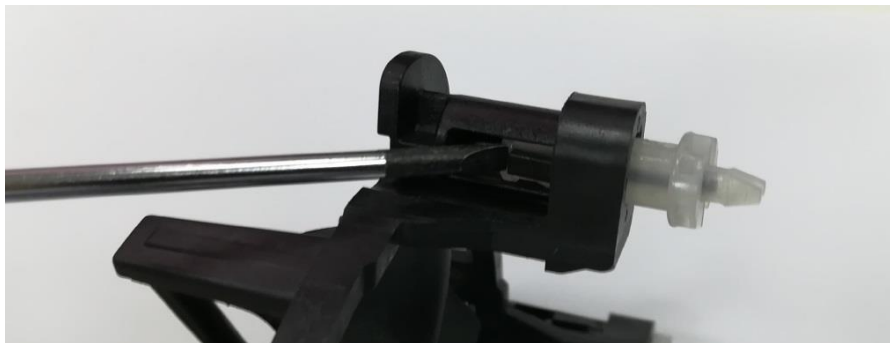
Fig. 17:



Once the heat sink is separated from the fan, procedures to separate the fan parts. First, we separate the blades from the rest with the help of the screwdriver.



Then, we separate the small white and black pieces from the corners, also with the help of the screwdriver.



That way it would be once separated:



3.6 CPU and Memory Card.

These are the last components that can be extracted from the motherboard. It requires a special care to handle them. The CPU as a protection which must to be lifted to take out the unit. To do this, look at the figure 18, we must press on the clip and then while it is pressed move it outward and release the pressure. The cpu can be extracted with the fingers fig. 19. The memory card is inserted in its slot and retained with some clips. Use the hands to open the clips and lift the memory card until it reaches the enough angles to pull out from the slot fig.21.

Fig. 18:



Fig. 19:



Fig. 20:



Fig. 21:



Fig. 22:



Fig. 23:



3.7 Lamination Plate

This piece is in one side of the case. It is the place where the motherboard shows its external connections. It can be extracted just pushing with fingers, fig. 24.

Fig. 24:



3.8 L Shape Fastener, FDD fastener and ODD fastener lock.

These plastics pieces can be take out just using the hands. Look at the following figures which show how to do.

L Shape Fastener is just press a tap inside the case, fig. 25. The HDD Plastic Tray is taken out, pressing the bigger green pieces with both fingers fig.27. The locks pieces take out pull out at the same time that we lift the piece, fig 26.

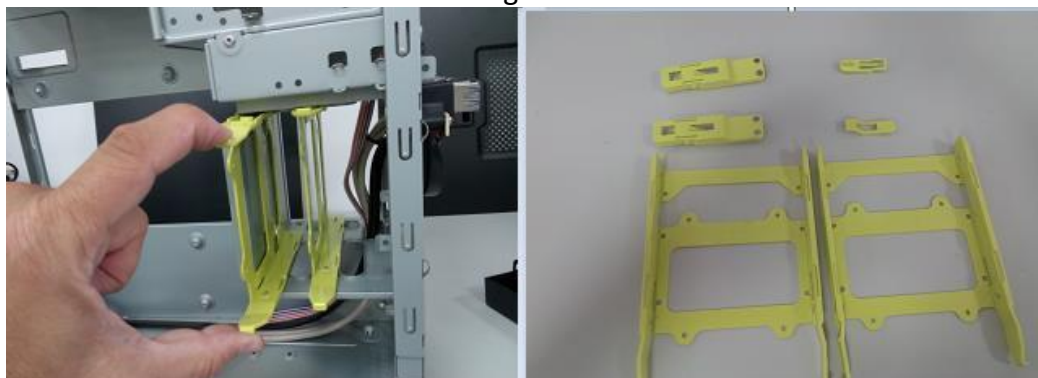
Fig. 25:



Fig. 26:



Fig. 27:



With the help of our hands we remove the Fan Holder:

Step 1



Step 2



Step 3



3.9 Power Supply disassembling

To take out the Power Supply from the case just pull and turn by hand the piece up to it can be extracted, fig. 28.

Unscrew all the screw which is shown in the fig. 29.

Use the scissors to cut the wires, fig. 30 y fig. 31.

Fig. 28:



Fig. 29:

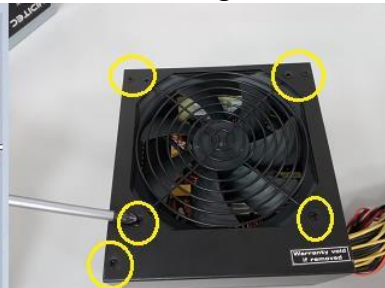
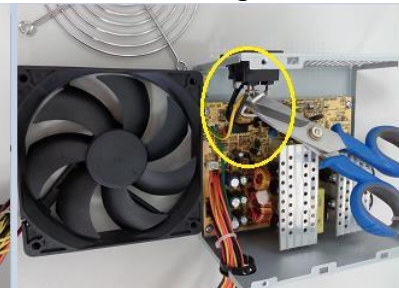


Fig. 30:



Unscrew the screw shown in the fig. 38. With this action all the pieces are disassembled.

Fig. 31:

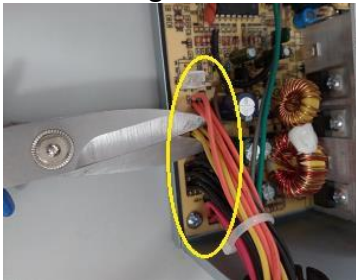
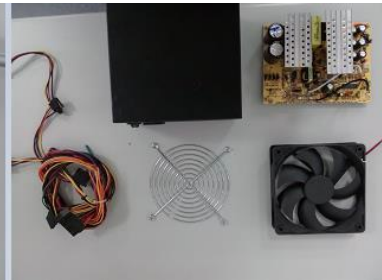
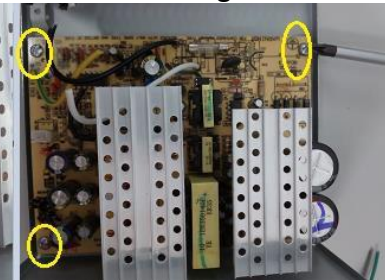


Fig. 32:



3.10 Front Bezel, Front 3.5", Front 5.4".

Use the hand to bend the taps fig. 33 and fig. 34. Then just turn the front, fig. 35.

Fig. 33:



Fig. 34:



Fig. 35:



Fig. 36:



Once the front bezel is disassembled it easy to take out the others two fronts. Just use the fingers to bend the fix taps, fig. 37 and fig. 38.

Fig. 37:



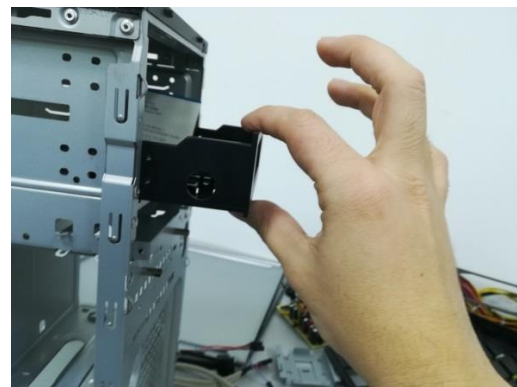
Fig. 38:



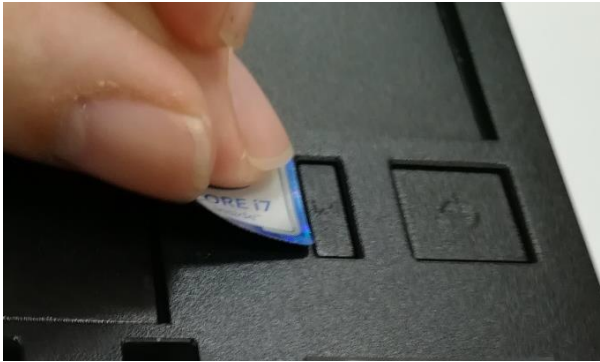
Fig. 39:



Before finalizing we extract the HDD Hold 5,25":



Finally, we remove the stickers from the front with your fingers.



3.11 USB and LED Holder and SW Holder disassembling

In the front of the metal case is the USB panel. This panel must be unfixed from the metal, unscrewing two screws fig. 40.

For the Led holder just applying a torque will be release fig. 41 and 42. Fig. 43 shows the USB and the fig. 44 the LED Holder.

Fig. 40:

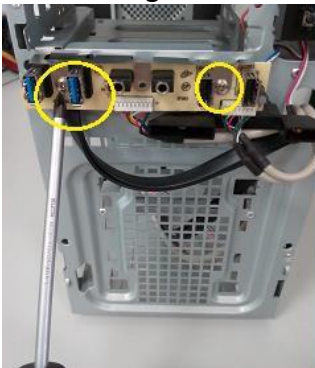


Fig. 41:



Fig. 42:

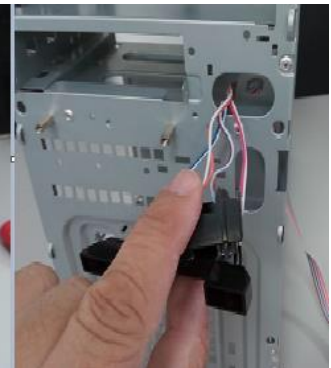


Fig. 43:



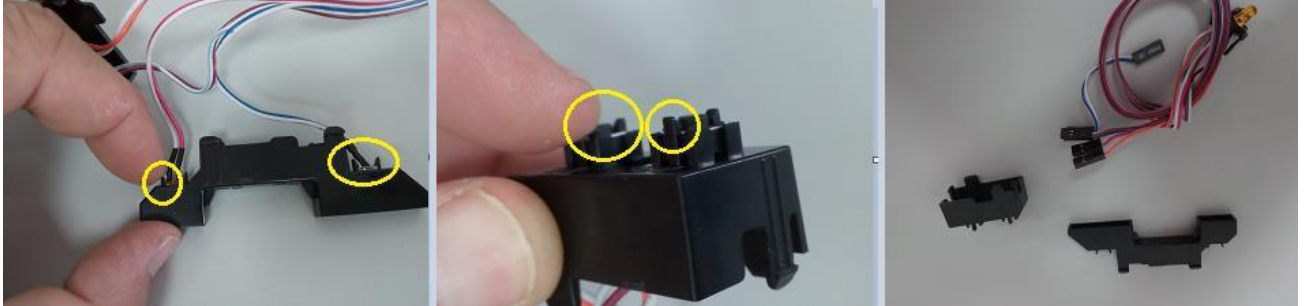
Fig. 44:



The plastic and the wires can be separated in the LED holder. To do that we must open the taps and pull from the wires, fig 45, fig 46:

Fig. 45:Fig.46:

LED /Internal wires:



For the USB/Sound wires me must unscrew two screws and use the scissors to cut the wires see the fig

Fig. 47

Fig. 48

Sound Internal Wires:



USB Circuit Printed

USB Internal wires



12. Case

The remaining material is the case.



4. RAAE\WEEE.

The composition of the elements must be taken account if they are going to be reused o recycled.

To know that information visit the following URL:

http://tiendattl.es/upload/tkpro/Weee_declaration.tkpro.pdf