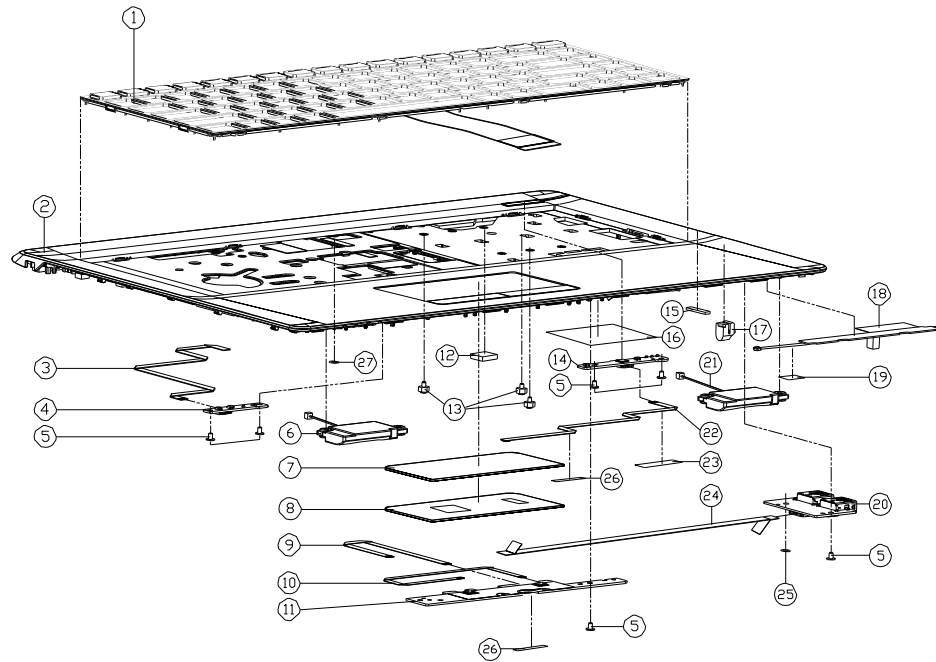


Top

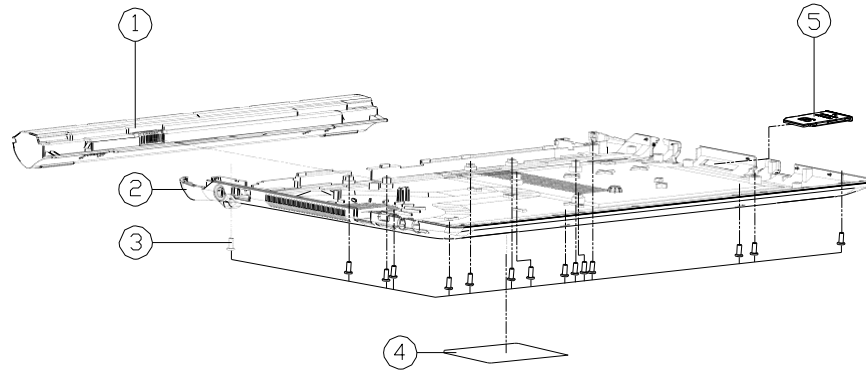


ITEM	PART NAME
1	WIN8 K/B USA (BLACK) FRAME (US) MODULE W330AU
2	TOP CASE MODULE N240JU
2	TOP CASE MODULE N241JU
3	FFC CABLE LED MB 210MM 60V 8PIN (HT) N240JU
4	LED BOARD V1.0 N240PU
5	SCREW M2*3L K1 BZ ICT NY (DD=#4.5,DT=0.4)
6	SPR+CABLE L 23*44 LSW 41 25MM LT2840XP (OVD) N250JU (AID RUBBER)
7	TOUCH PAD SYNAPTICS 84*42 TM-03175-002 N240BU
8	TP MODULE MYLAR(PET+TESA4965) N240JU
9	FFC CABLE TP CLICK 105.5MM 60V 8PIN (HT) N240JU
10	FFC CABLE TP MB 112MM 60V 6PIN (HT) N240JU
11	CLICK BOARD V1.0 N240PU
12	THERMAL PAD RS300 13.9*13.9*4.0 N240JU
13	SCREW M2*2.5L 4#-25 D=5 STEEL ICT NY FOR NIFF CARD(CHAME)
14	POWER SW BOARD V1.0 N240PU
15	TOP RUBBER(SILICONE RUBBER) FOR TYPE C (0.5X0.3T) N240BU
16	PALMREST-L MYLAR (MYLAR+3M467) (73448#0.3T) N240BU
17	TV RUBBER SILICONE N240JU
18	ANTENNA OPEN 36*46 WT LTE-2 PFD 0.7*0.6*0.6*0.6*0.6*0.6*0.6*0.6 L=30MM
19	TAPE MYLAR TRANSPARENT (20*10*0.05) P180HM
20	USB BOARD V4.0 N240BU
21	SPR+CABLE R 23*44 LSW 41 25MM LT2840XP (OVD) N250JU (AID RUBBER)
22	FFC CABLE POWER MB 179.5MM 60V 8PIN (HT) N240JU
23	TAPE MYLAR (C),MYLAR M550J
24	FFC CABLE USB MB 161MM 60V 16PIN (HT) N240JU
25	WASHER 06*03*0.3t (MYLAR)
26	TAPE MYLAR (B),MYLAR M550J
27	WASHER (05*02.5*0.25T) FOR BACK COVER BESS M550ME

Figure A - 1
Top

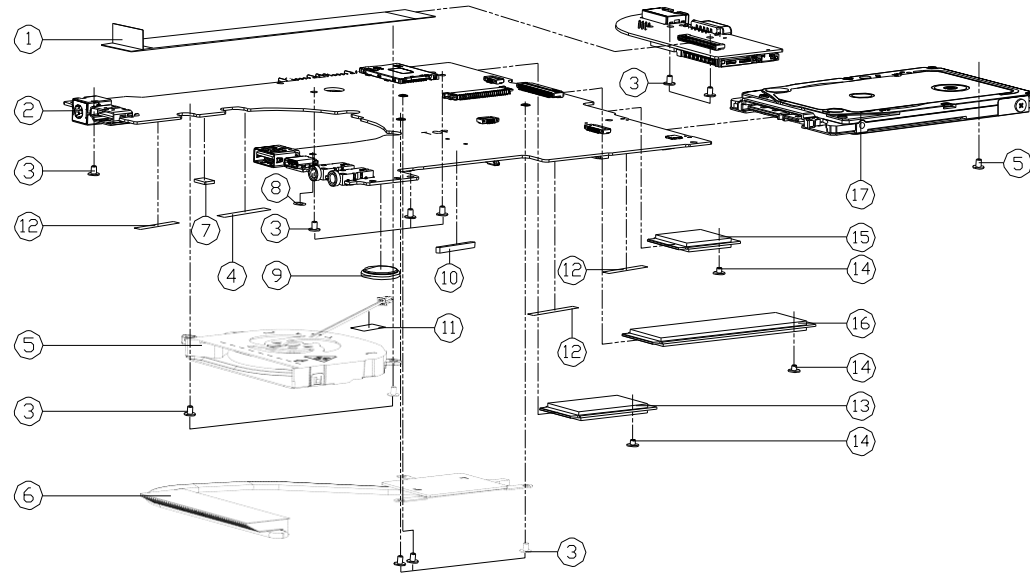
Bottom

Figure A - 2
Bottom



ITEM	PART NAME
1	INTP S LE 148W/228H/32WH 4SP SMP/SID (T) GAUGE (C) (TEXTURE) GRD 9807255F N240JU
1	INTP S LJ 148W/228H/32WH 4SP (ETAC/SWID) (T) GAUGE (C) (TEXTURE) S43875002 N240JU
1	INTP S LJ 152W/225H/44WH 4SP SMP/SID (T) GAUGE (C) (TEXTURE) 9807255F N240JU
1	INTP S LJ 148W/308H/44WH 4SP (ETAC/LG) (T) GAUGE (C) (TEXTURE) S43875002 N240JU
1	INTP S LE 152W/228H/24WH 3SP SMP/SID (T) GAUGE (C) (TEXTURE) 9807255F N240JU
1	INTP S LJ 152W/228H/24WH 3SP (ETAC/SWID) (T) GAUGE (C) (TEXTURE) S43875002 N240JU
2	BOTTOM CASE MODULE (CHANGE) N240BU
3	SCREW M2.5*6L K BZ ICT NY
4	PRODUCT LABEL FOR N240BU (FOLLOW NEW CE SAFETY)
4	PRODUCT LABEL FOR N241BU (FOLLOW NEW CE SAFETY)
4	PRODUCT LABEL FOR N240PU
4	PRODUCT LABEL FOR N241PU
4	PRODUCT LABEL FOR N240WU
4	PRODUCT LABEL FOR N241WU
5	DUMMY 30ML NON PUSH TYPE PC-PINS (C7230P-701DEXCHANGE) W970S0W

MB

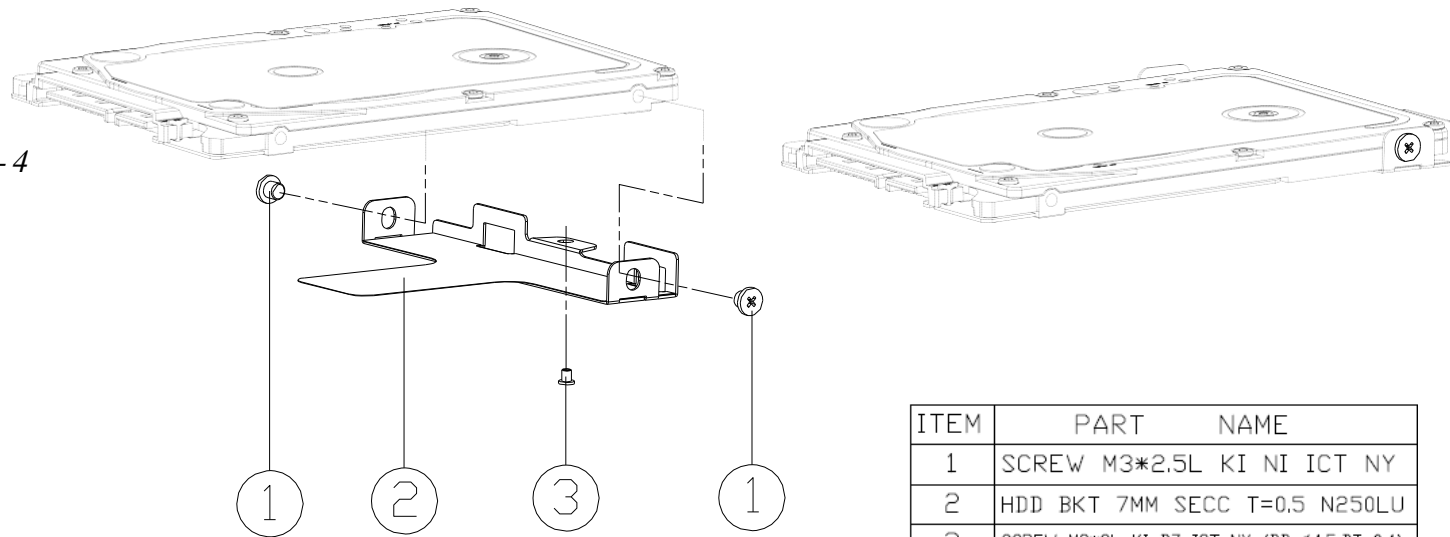


ITEM	PART NAME
1	FFC CABLE FOR AUDIO TO MB 133MM 60V 40PIN (4FT) N240JU
2	MINI USB TO USB-C ADAPTER (TYPE-C TO USB-A) N240JU
2	MINI USB TO USB-C ADAPTER (TYPE-C TO USB-A) N240JU
2	MINI USB TO USB-C ADAPTER (TYPE-C TO USB-A) N240JU
2	MINI USB TO USB-C ADAPTER (TYPE-C TO USB-A) N240JU
3	SCREW M2*3L KI BZ ICT NY (DD=Ø4.5,DT=0.4)
4	TAPE MYLAR (C),MYLAR M550J
5	FAN MODULE <FORCECON> N250LU
6	HEATSINK MODULE N250JU
7	HEATSINK RUBBER SILICONE (7*5*2) N240JU
8	WASHER Ø6*Ø3*0.3t (MYLAR)
9	BATTERY 3V 220MA BBBBCR2032B (KTS)
10	MB HEATSINK RUBBER SILICONE (30*5.5T*5) N250JU
11	TAPE MYLAR TRANSPARENT (20*10*0.05) P180HM
12	TAPE MYLAR (B),MYLAR M550J
13	LTE 4G LTE OPS MODULE (WITHOUT SIM CARD) FOR USB-C INTERFACE V3000Z
13	LTE 4G LTE MODULE (WITH SIM CARD) FOR USB-C INTERFACE V3000Z
13	W/OUT SIM CARD LTE 4G LTE OPS MODULE FOR USB-C INTERFACE V3000Z
14	SCREW M2*2L KI NI ICT NY (DD=Ø5 ,T=0.5)
15	WLAN+BT COMBO DUAL BAND INTEL WHISTLER PEAK 955556W MINI-PCI-E N2 2230 P830S
15	WLAN+BT COMBO DUAL BAND INTEL SANDY BEAK 955556W MINI-PCI-E N2 2230 P830S
16	SSD M.2 2280 512GB SAMSUNG MZVL512HLP-0000 (PM9A1) PCIe GEN4 3D TLC FV42Y1700J
16	SSD M.2 2280 512GB INTEL SSDPEKX512G7 (60MP) PCIe GEN4 3D TLC FV4P5100C
16	SSD M.2 2280 512GB CRUCIAL CT525MX000SS04 (MX300) SATA3 3D TLC
16	SSD M.2 2280 256GB DELL KEYE G4189-256GB (G4189) SATA3 (MLC)
16	SSD M.2 2280 256GB CRUCIAL CT256MX000SS04 (MX300) SATA3 3D TLC
16	SSD M.2 2280 512GB PHISON ESMP512GM2-E7 (E7) PCIe GEN4 MLC
16	SSD M.2 2280 128GB PHISON SSMP128G1TC2-S11 (S11) SATA3 TLC
16	SSD M.2 2280 256GB PHISON SSMP256G1TC2-S11 (S11) SATA3 TLC
16	SSD M.2 2280 512GB PHISON SSMP512G1TC2-S11 (S11) SATA3 TLC
16	SSD M.2 2280 256GB SANDISK SD9WAT-256G (4000) SATA3 (SANDISK 10NM MLC) FV423000J
17	W/O HDD ASS'Y N250LU
17	W/ HDD ASS'Y N250LU

Figure A - 3
MB

HDD

Figure A - 4
HDD



ITEM	PART	NAME
1	SCREW	M3*2.5L KI NI ICT NY
2	HDD BKT	7MM SECC T=0.5 N250LU
3	SCREW	M2*3L KI BZ ICT NY (DD=Ø4.5,DT=0.4)