

Disassemble Process: TTL ULTRABOOK

INDEX:

1. Model.
2. Result after disassembling all.
3. Process step by step.
 - 3.0 Unplug the Power Cord
 - 3.1 Take out battery by and Covers.
 - 3.1.1 Battery
 - 3.1.2 Bottom Plastic Cover.
 - 3.2 Take out keyboard.
 - 3.3 Take Serial, SD, Touch Pad wireless, cpu modules, and IonLithum Cell.
 - 3.3.1 Wifi pcb, Bottom cell coin, Cpu Pipe, Mainboard, fan, Usb, SD, Touch pad, substrate Cover
 - 3.3.2 Usb Circuit Board
 - 3.4 Display out.
(LCD display, frontal cover, substrate cover, LCD Panel circuit Board).
 - 3.5 Power Supply.
4. WEEE

1. Model.

The following process is applied for the product TTL PORTATIL.

Fig.1a.



Fig. 1b.



For this model fig.1a we need only two tools:

Use the following tools:

- Screwdriver Philips 0x65, fig.1b.
- Tweezers bent Tip, fig1b.

2. Result after disassembling all

After we have disassembled the product, figures fig.2a, b, and c.

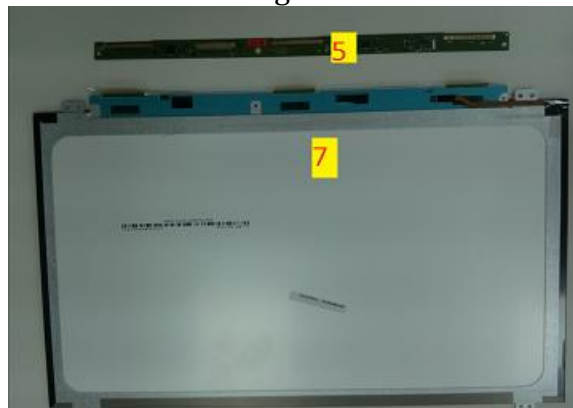
Fig. 2a:



Fig.2b:



Fig.2c:



This is the list of the disassembling parts.

1. Printed Circuit USB.	Printed Circuit	9. Fan.	Metal/Plastic
2. Memory Circuit Board (mainboard).	Printed Circuit	10. Cpu Cooper Pipe.	Metal
3. Wireless Circuit Board.	Printed Circuit	11. KeyBoard.	Plastic
4. Touch Pad Circuit Board.	Printed Circuit	12. Main battery Pack	Metal
5. LCD Panel Circuit Board.	Printed Circuit	13. Power Cord.	Metal/Plastic
6. Printed Circuit SD.	Printed Circuit	14. Power Supply.	Metal/Plastic
7. LCD display.	Printed Circuit	15. Plastics covers.	Plastic
8. Li ion battery.	Metal		

3. Process step by step.

3.0 Unplug the Power Cord by Hand.

Pull out from the connector in the right bottom corner, fig. 3:

Fig 3



3.1 Take out battery by and Covers.

3.1.1 Main Battery Pack by hand.

Use the tweezers and hand at the same time to extract the main battery pack, fig.4

Fig4.



3.1.2 Bottom Plastic Cover.

Unscrew all the remains screws from the back cover fig. 5.

To take out the bottom plastic cover, do levering with the tweezers in a small gap in the battery space fig .6 and then put your fingers inside the hole and pull up.

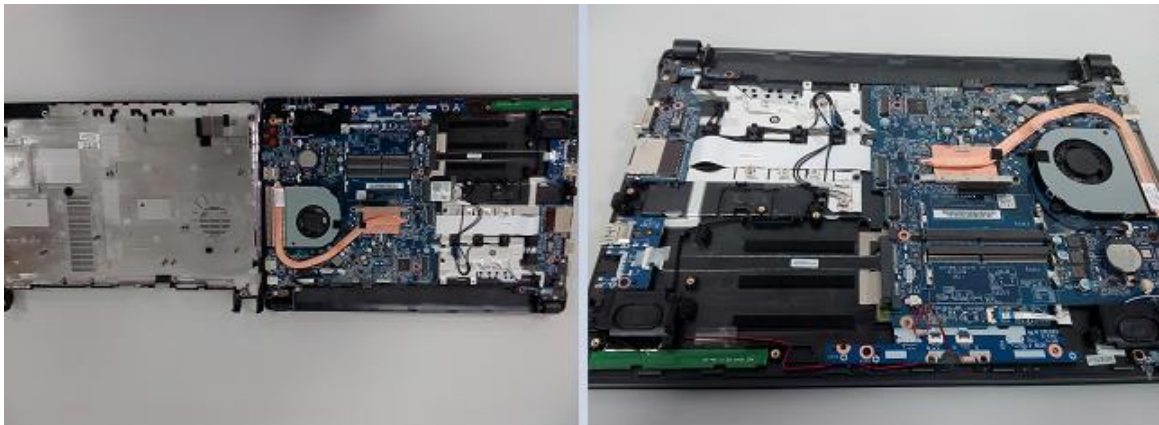
Fig.5:



Fig. 6:



Fig 7



3.2 Take out the keyboard.

Use the plane metal part of the tweezers in the upper side. Do a lever and pull out the keyboard, fig. 7 and fig.8

Fig. 7:



Fig. 8:



3.3 Take serial, wireless, CPU modules, and IonLithum Cell.

3.3.1 Wifi pub, Bottom cell coin, Cpu Pipe, Mainboard, fan, Usb, SD, Touch pad, substrate Cover

Unscrew all the remains screws that you can see in the fig.9. Some screws attaches Wireless module, CPU heat and fan to the motherboard , and others attaches the motherboard to the substrate plastic cover.

There are some flats wires connections that have to be undone.

The Wifi pcb, once its fix was unscrewed, just pull out.

The result in the fig.10.

Fig9.:

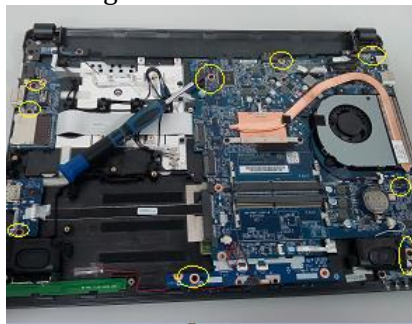
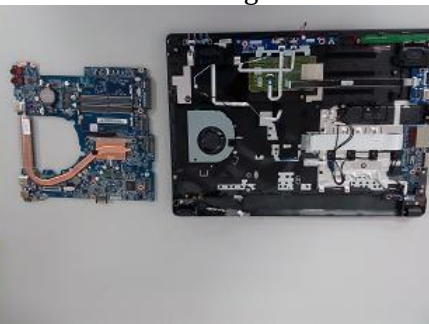
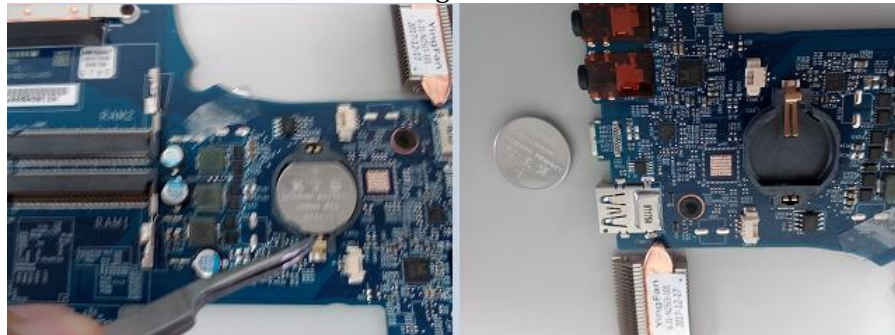


Fig. 10



To pull out the **button battery**, use for this the tweezers, pushing and pulling, fig.11

Fig.11:



For the Cpu pipe, unscrew according fig.12:

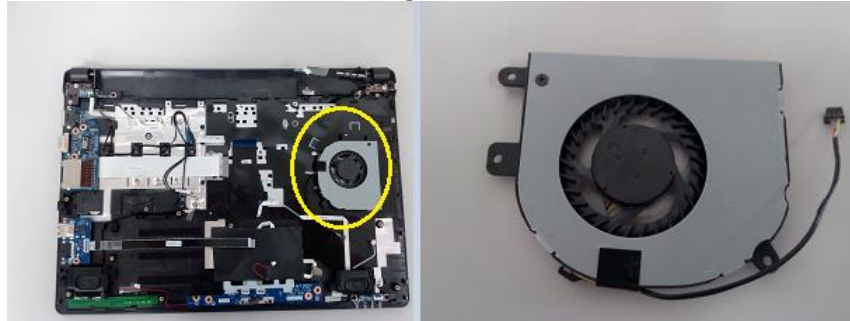
Fig.12:

Motherboard and CPU pipe



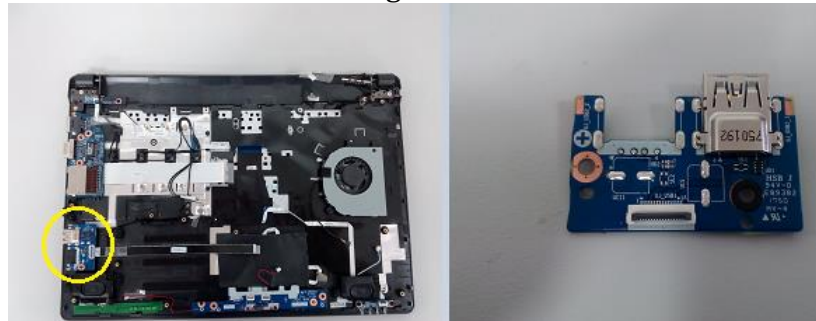
For the Fan fig.13:

Fig.13:



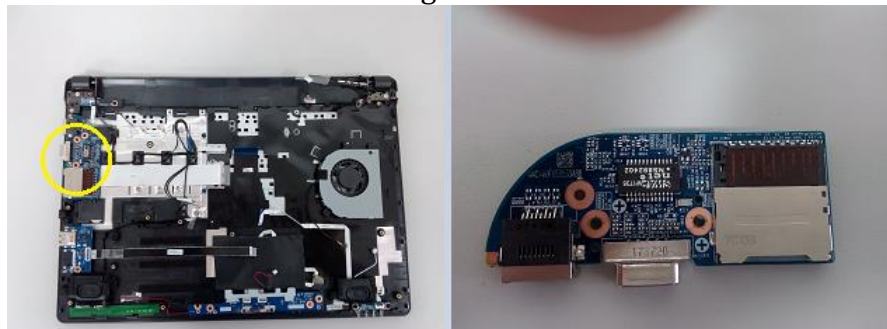
For the Usb printed Circuit fig.14:

Fig.14:



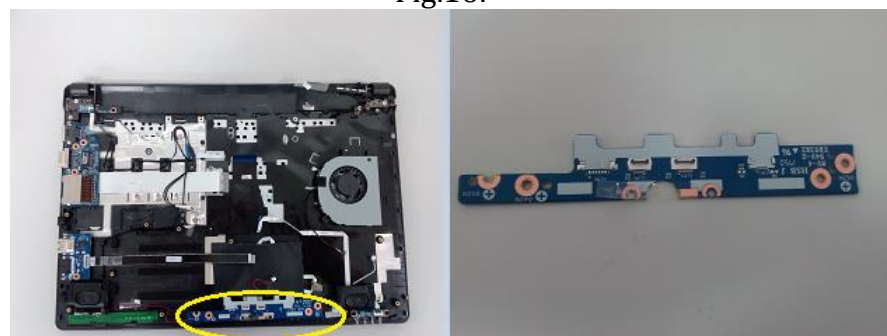
For the SD printed Circuit fig.15:

Fig.15:



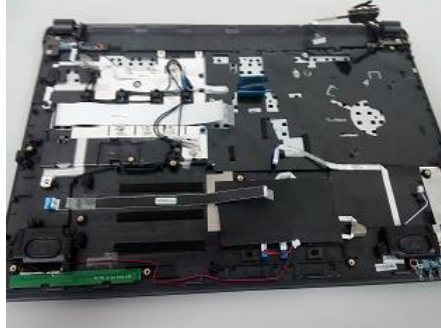
For the Touch pad circuit fig.16:

Fig.16:



The rest is the Substrate Cover fig.17:

Fig.17:



3.4 Display out.

Take out the screws fixed in the corners to separate the top cover from the back one. Once this was done we will have the display unit prepared to dissembling fig.18:

Fig. 18:



In the right and left bottom from the fig.18 there are two screws. Unscrew them to pull out the frontal plastic cover fig. 19. The result is the fig. 20.

Fig.19:



Fig. 20:



In the bottom and up corner of fig. 20 there us some screws fixed. Unscrew them to separate the LCD unit from its plastic substrate fig.21 y fig.22. The result is the fig 23.

Fig. 21:



Fig.22:



Fig. 23:



Use the tweezers to unstick the circuit plastic guard.

Unscrew the small screws and pull out from the piece. The result is two elements the LCD panel and its LCD circuit, fig .24 and fig.25.



Fig. 24

Fig.25

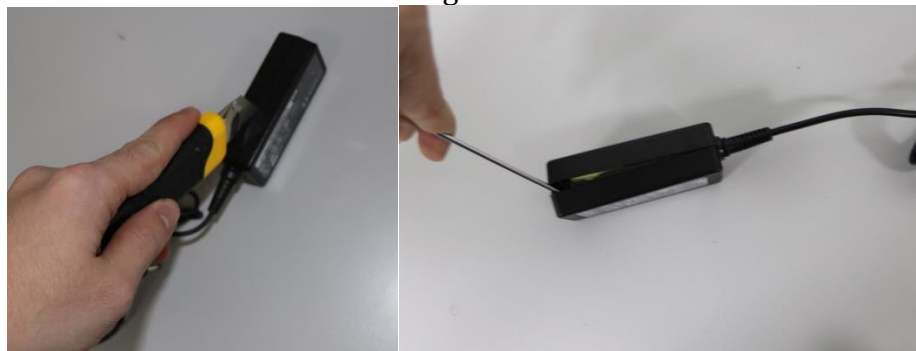


3.5. - Power Supply.

3.5.1. - Use the cutter and the screwdriver.

An opening is created on the side with the cutter and then separated using the screwdriver.

Fig. 26.



3.5.2. - We separate with our hands.

With the help of our hands we separate the plastic sides.

Fig. 27.



3.5.3. - Result previous step.

Once we manage to separate the plastic covers we have these two elements:

Fig 28.



3.5.4. - Cut the cable.

We cut the cable with scissors.

Fig.29.



3.5.5. - Completed Process.

Finally we see all the pieces disassembled individually.

Fig. 30.



3.5.6. - Cable disassembly.

First, the plug cable is cut, then with the cutter we cut the cable coverage.

Fig. 31.



3.5.7. - Result.

We get two cables: cable jacket (black) and cable insulation (white).

Fig.32.



4. - RAAW / WEEE.

The composition of the elements must be taken account if they are going to be reused o recycled. To know that information visit the following URL:

http://tiendattl.es/upload/ultrabook/Weee_declaration.ultrabook.pdf