

Disassemble Process: TTL ULTRAZERO

ÍNDICE

1. - Model.....	2
2. – Result after disassembling all.....	3
3. - Process step by step.....	4
3.1 Chassis Bottom Case.....	4
3.2 RAM Memory.....	5
3.3 Hard Disk.	6
3.4 Motherboard.....	7
3.5 Battery.	8
3.6 Metal Support Bottom Case.	9
3.7 Power Supply.....	10
3.7.1 Use the cutter and the screwdriver.....	10
3.7.2 We separate with our hands.	10
3.7.3 Results previous step.	10
3.7.4 Cut the cable.	11
3.7.5 Completed Process.	11
3.7.6 Cable Disassembly.....	11
3.7.7 Result.	12
4. - RAAW / WEEE.....	12

1. - Model.

The following process is applied for the TTL ULTRAZERO.

FIG. 1



FIG.2



For this model fig.1, we need only these tools:

- Screwdriver Super-SNCM, 3.0x100mm.
- Cutter
- Pliers Super Ego 514 de 180 mm

2. – Result after disassembling all.

After we have disassembled the product:

FIG. 3



This is the list of the disassembling parts. The numbers in red meets the list.

1	Chassis Bottom Case	Plastic	8	Cable	Plastic/Metal
2	Chassis Top Case	Plastic	8.1	Top and Bottom Cover Power Supply	Plastic
3	Motherboard	Printed Circuit	8.2	Electrical Circuit	Metal
4	Battery	Metal	8.3	Cable Jacket Power Supply	Plastic
5	Memory RAM	Printed Circuit	8.4	Cable Insulation Power Supply	Plastic
6	External Ports	Metal	9	Hard Disk	Printed Circuit
7	Metal Support Top Case	Metal			

3. - Process step by step.

3.1 Chassis Bottom Case.

Use the screwdriver to remove the screws and thus be able to separate the bottom cover.

FIG. 4



3.2 RAM Memory.

Use your hands to separate the RAM Memory from the rest of the device, as shown in the following images:

FIG. 5



3.3 Hard Disk.

Use the screwdriver to remove the screw.



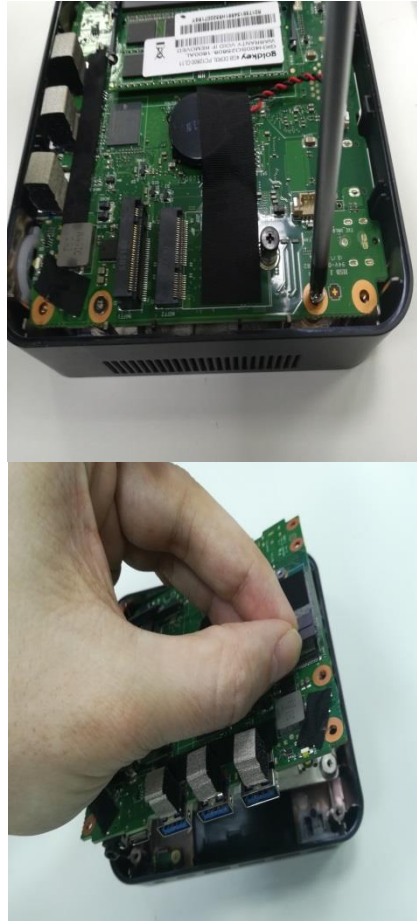
Use your hands to separate the Hard Disk from the rest of the device.



3.4 Motherboard.

With the help of the screwdriver remove the screws that join the motherboard with the rest of the device.

FIG. 6



3.5 Battery.

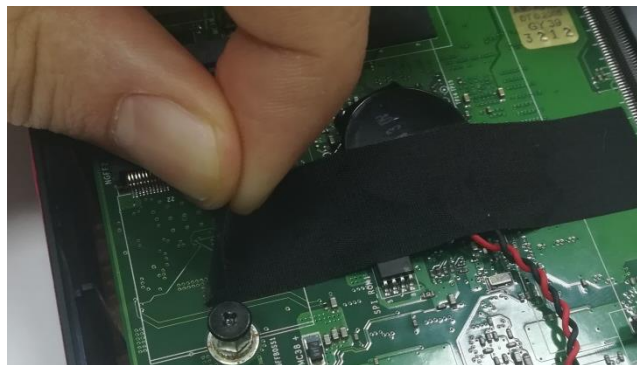
3.4 Battery.

Remove the cable from the connector:

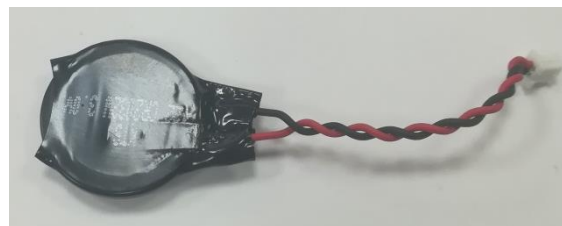
FIG. 7



Use your hands to separate the tape:



The battery is already completely extracted:



The protective plastic can also be removed with your hands:



3.6 Metal Support Bottom Case.

Use your hands to separate the metal support from the rest of the device, as shown in the following images:

FIG. 8

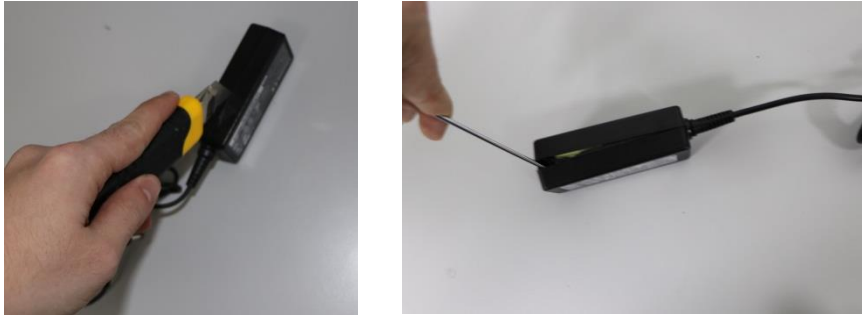


3.7 Power Supply.

3.7.1 Use the cutter and the screwdriver.

An opening is created on the side with the cutter and then separated using the screwdriver.

FIG. 9



3.7.2 We separate with our hands.

With the help of our hands we separate the plastic sides.

FIG. 10



3.7.3 Results previous step.

Once we manage to separate the plastic covers we have these two elements:

FIG. 11



3.7.4 Cut the cable.

We cut the cable with scissors.

FIG. 12



3.7.5 Completed Process.

Finally we see all the pieces disassembled individually.

FIG. 13



3.7.6 Cable Disassembly.

First, the plug cable is cut, and then with the cutter we cut the cable coverage.

FIG. 14



3.7.7 Result.

We get two cables: cable jacket (black) and cable insulation (white).

FIG. 15



4. - RAAW / WEEE.

The composition of the elements must be taken account if they are going to be reused o recycled. To know that information visit the following URL:

http://tiendattl.es/upload/ultrazero/Weee_declaration.ultrazero.pdf